


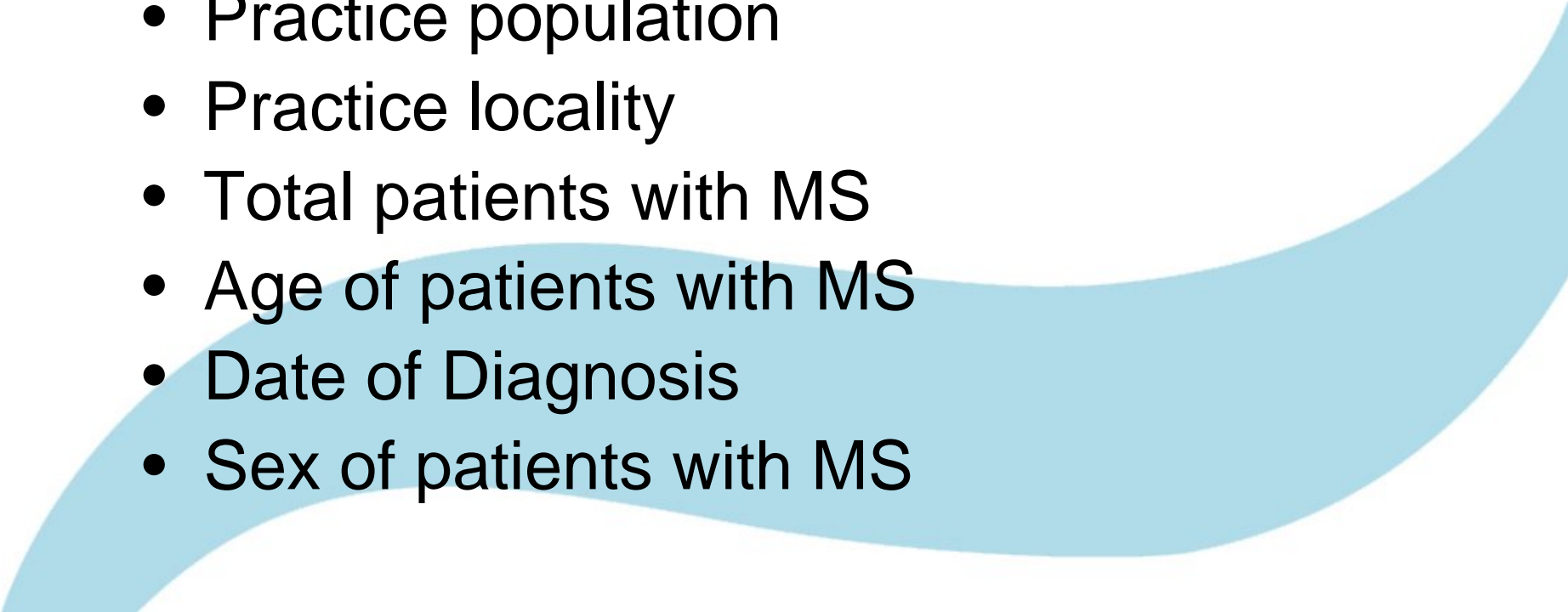
Multiple Sclerosis Epidemiology in  
Ayrshire & Arran 2008-2013:  
Data from Primary Care Records

A large, light blue, wavy graphic element that curves across the bottom of the slide, starting from the left and ending on the right.

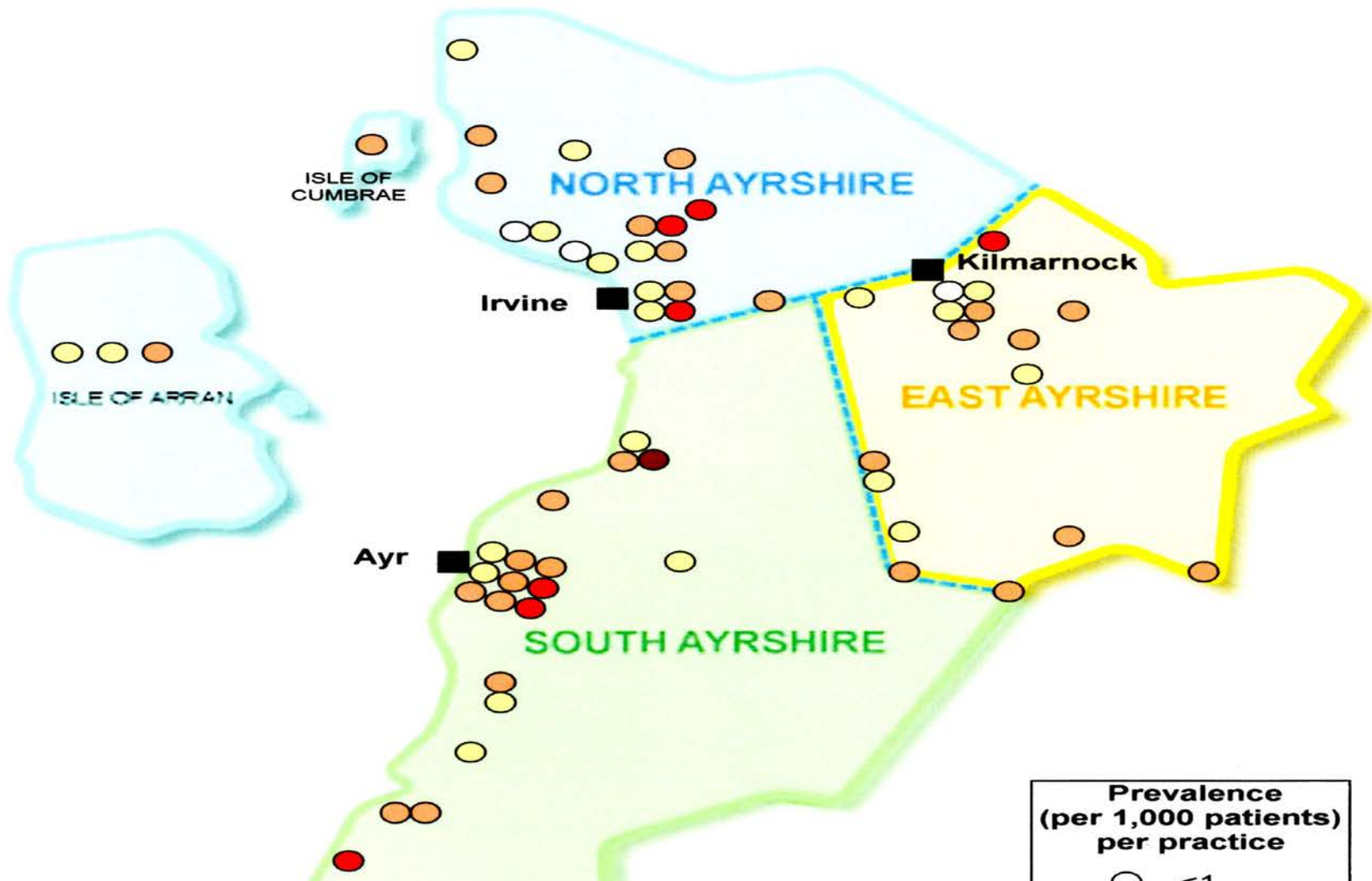
## Methodology

- Data extraction tool developed by Health Board Clinical Effectiveness department
- READ codes used to identify patients with diagnosis of MS
- All 59 practices gave permission and data extraction was complete for all primary care practices in A&A

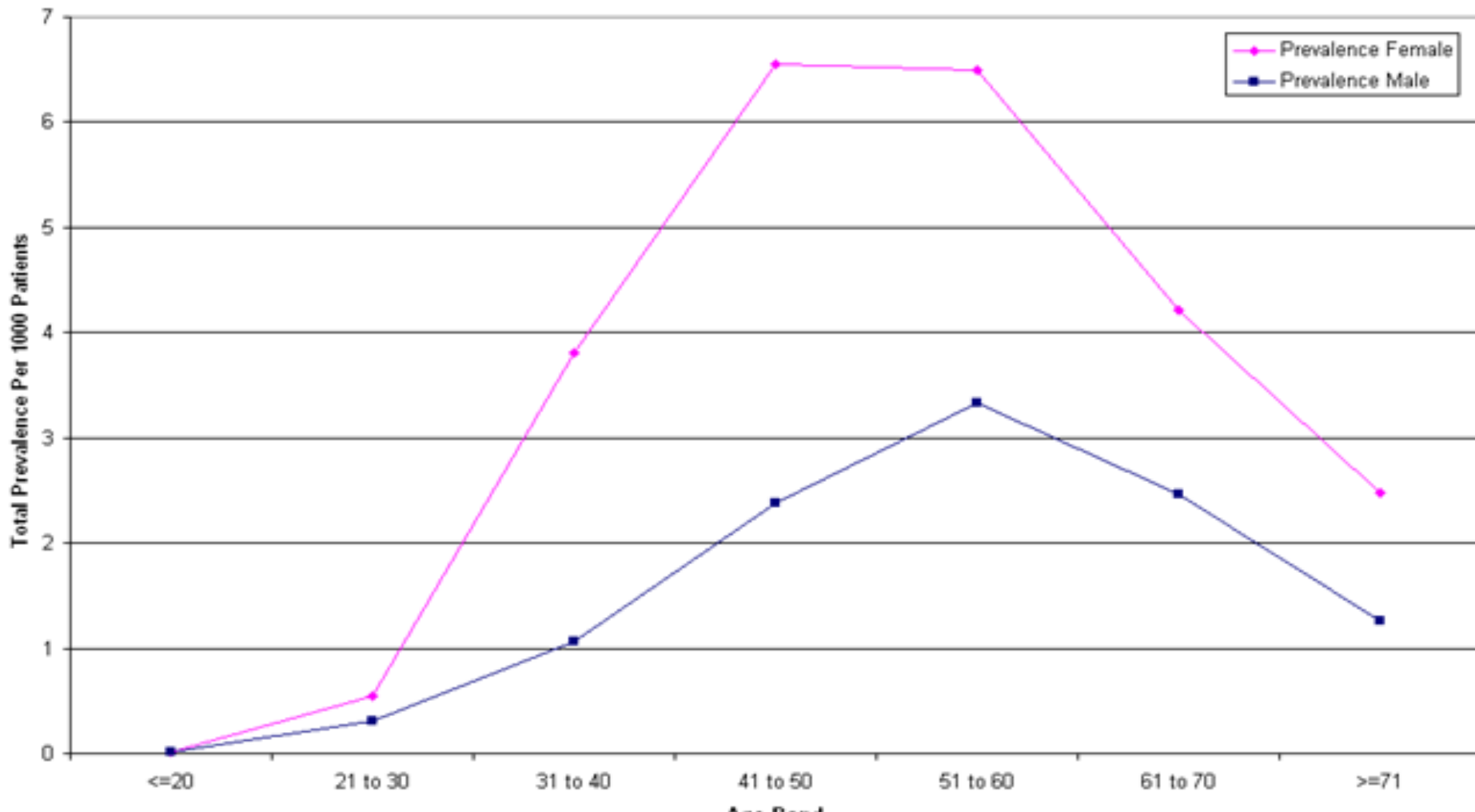
## Information Obtained

- Practice population
  - Practice locality
  - Total patients with MS
  - Age of patients with MS
  - Date of Diagnosis
  - Sex of patients with MS
- 
- A large, light blue, wavy graphic element that starts from the bottom left and curves across the bottom of the slide, partially overlapping the list items.

# Multiple Sclerosis Prevalence Rates at General Practices (2006)



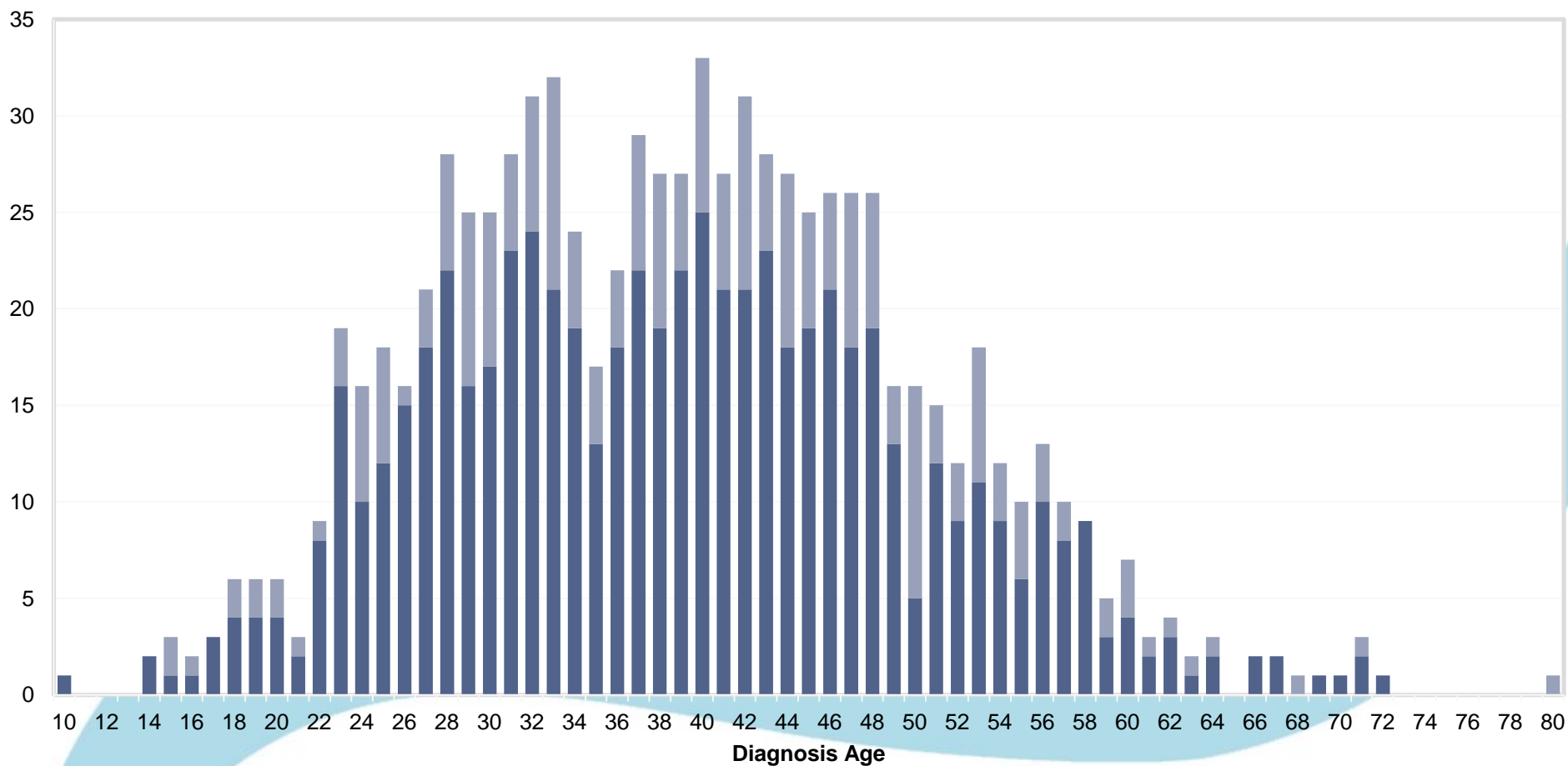
# Prevalence by age and sex



## Total Prevalence by Age Band and Sex

Age Band	Prevalence Female	Prevalence Male
<=20	0.02	0.02
21 to 30	0.55	0.31
31 to 40	3.81	1.07
41 to 50	6.55	2.38
51 to 60	6.5	3.33
61 to 70	4.22	2.46
>=71	2.48	1.26

# Age at Diagnosis (2013)



## Change in Prevalence 2008-2013

- 2008 overall prevalence 235/100,000
- 2013 overall prevalence 269/100,000
- 2013 168 patients (126 women 42 men)  
aged >65



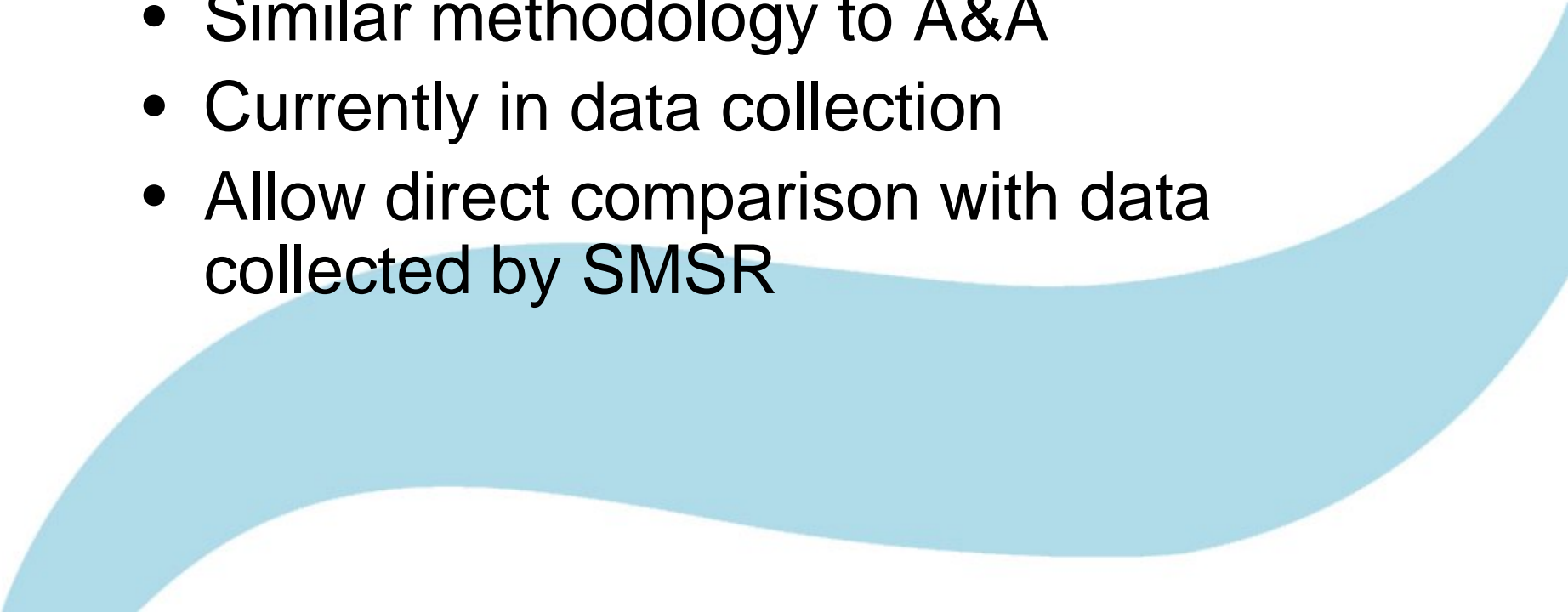
## Incidence rates extrapolated from date of diagnosis

- 2002-2007 mean of 46 new diagnoses per year = 12.2/100,000
- 2008-2013 mean of 32 new diagnoses per year = 8.5/100,000

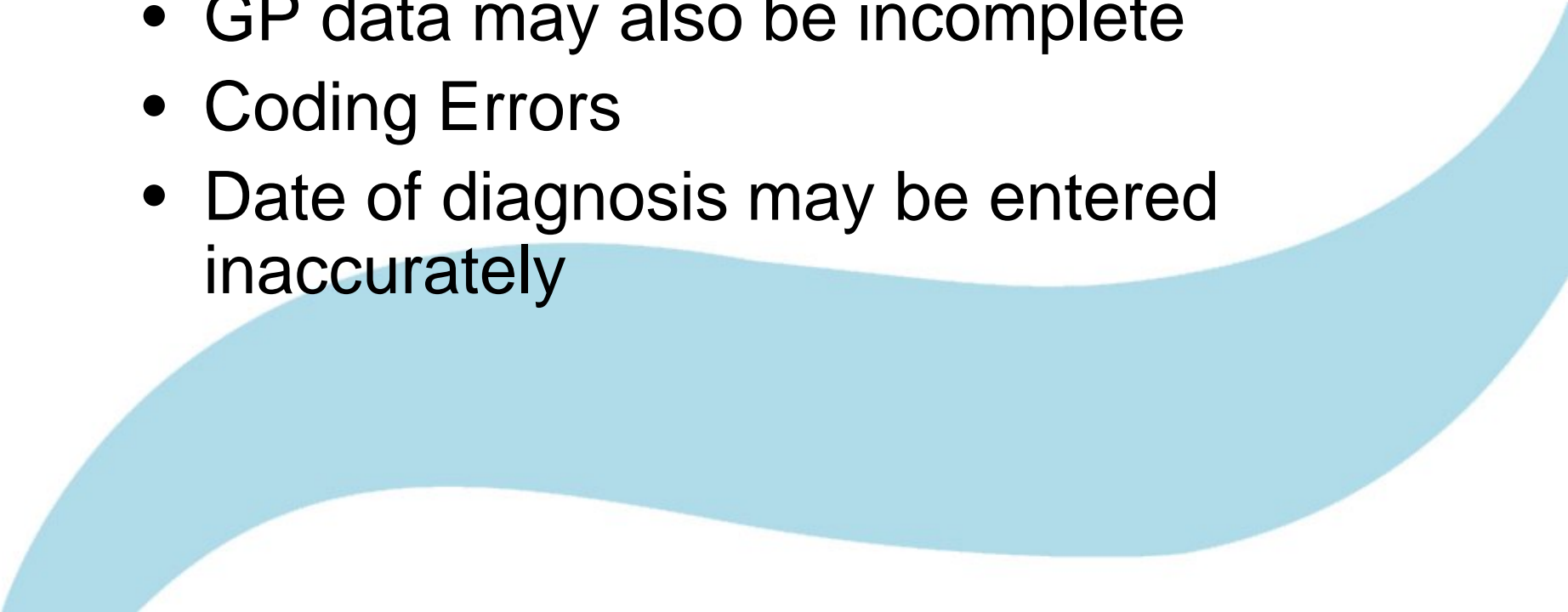
# Primary Care v National Register Data

	A&A	SMSR
I/R	8.5	8.2
Age	38	41
M/F	1:2.4	1:2.3

## Lanarkshire Project

- Similar methodology to A&A
  - Currently in data collection
  - Allow direct comparison with data collected by SMSR
- 
- A large, light blue, wavy graphic element that starts from the bottom left and curves upwards towards the right, spanning across the bottom half of the slide.

## Caveats

- GP data may also be incomplete
  - Coding Errors
  - Date of diagnosis may be entered inaccurately
- 
- A large, light blue, wavy graphic element that starts from the bottom left and curves upwards towards the right, spanning across the bottom half of the slide.

“Oh Scotia! my dear, my native soil! For whom my warmest wish to heaven is sent; Long may thy hardy sons of rustic toil Be blest with health, and peace, and sweet content”

The Cotters Saturday Night, Robert Burns