

Scottish MS Register – Research

Dr Jonathan O’Riordan



Scottish MS Register



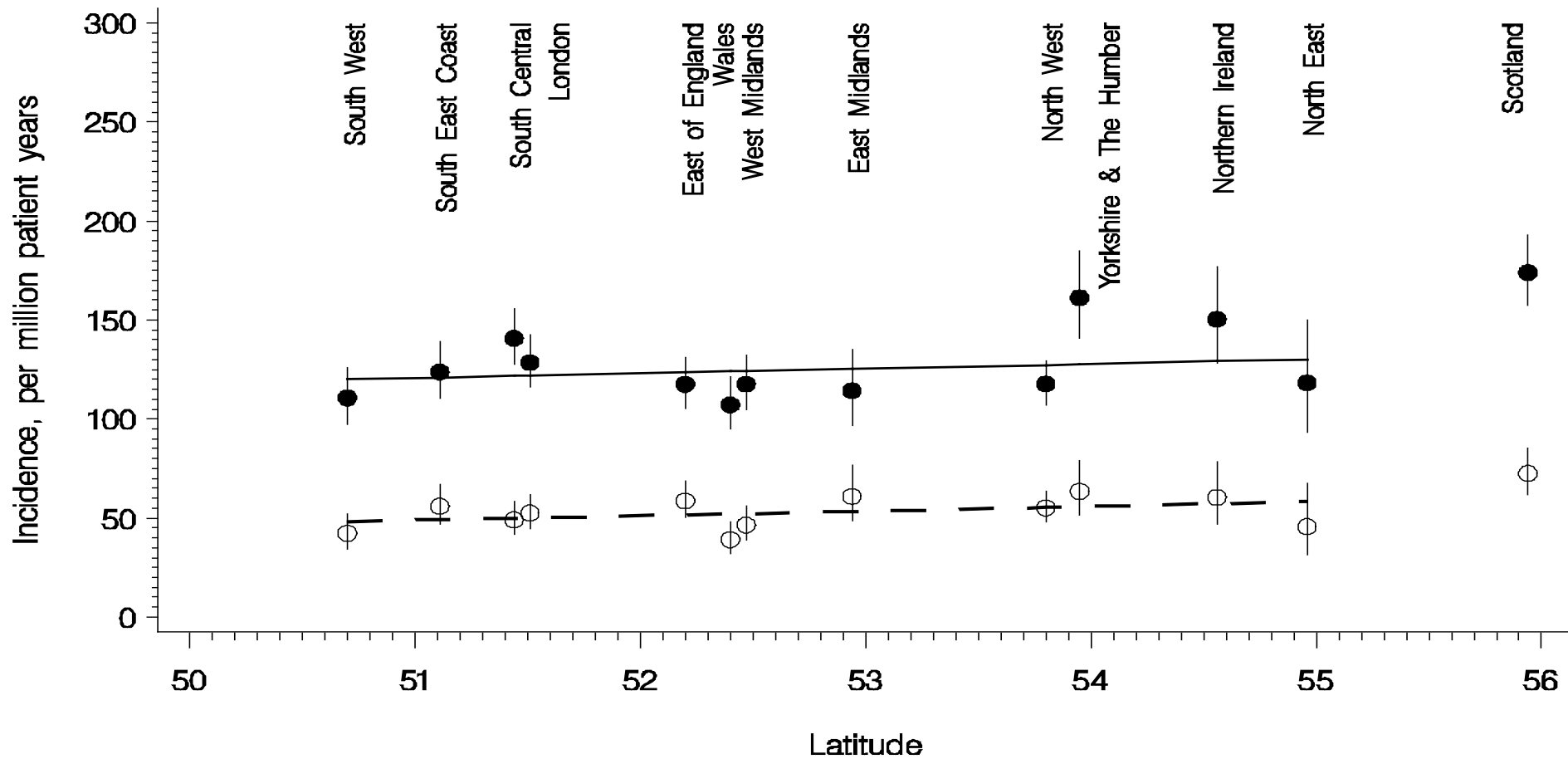
In the month of December 1822
I travelled from Ramsgate to the
Highlands of Scotland for the purpose
of passing some days with a
Relation for whom I had the
affection of a Son. On my arrival

Saturday January 15.	Grieve		
I	Grieve	I only walk in my Room	19 $\frac{3}{4}$
Sunday January 16.	Grieve		
		To have walked in my Room this Day 1 Hour & 6 $\frac{1}{2}$ Minutes	66 $\frac{1}{4}$
During this Week			341 $\frac{2}{4}$
I walk 6 Hours & 41 $\frac{3}{4}$ Minutes.			

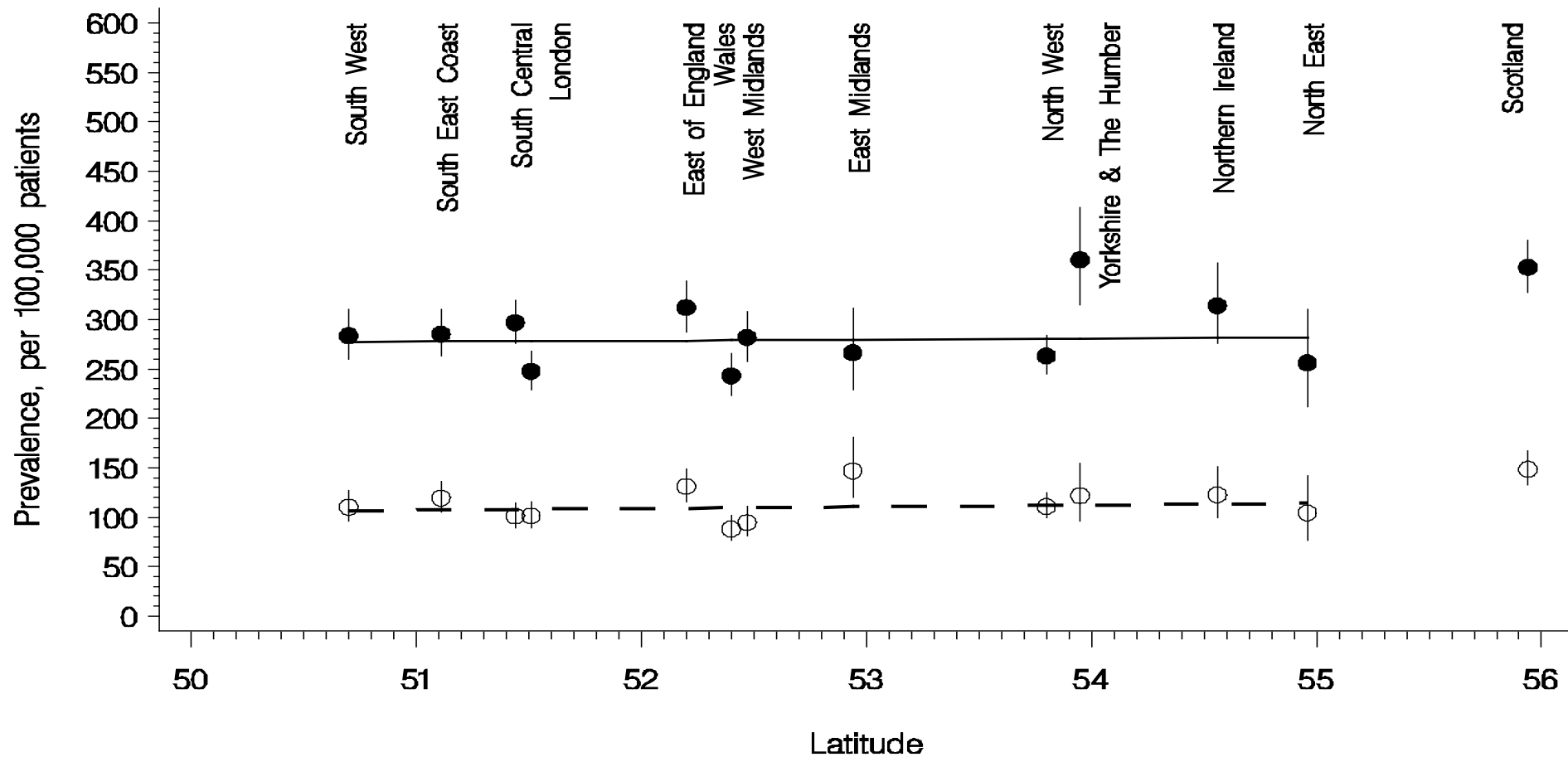
General Practice Research Database

- 1.1 million 1990
- 4.0 million 2006/10
- 8% of UK population
- Age and sex distribution similar to UK

Regional variation - incidence



Regional variation - prevalence



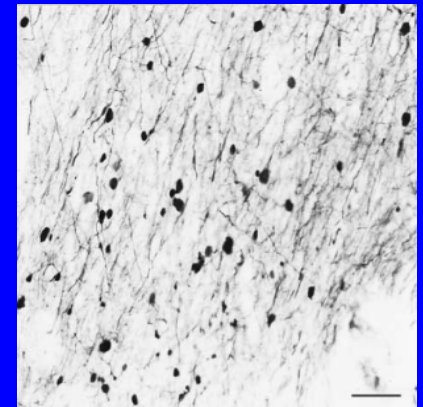
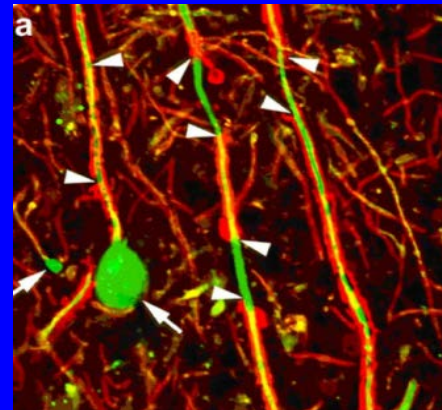
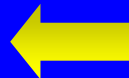
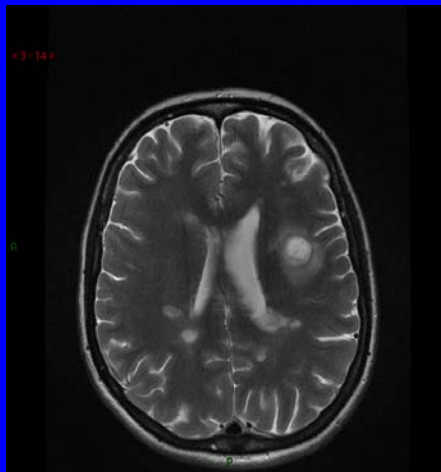
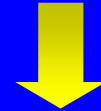
Scotland



- Tartan
- Red hair
- Kilt



Multiple Sclerosis



Scottish MS Register

- Unique dataset
- 5 year data
- Ascertainment & validity

Scottish MS Register - potential

- Prescribing data
 - Morbidity & mortality
 - Primary and secondary care links
-
- Dr Kerr Grieve, University of Dundee

Scottish MS Register - potential

- epidemiological trends of MS over time
 - Association with latitude
 - incident hot spots & association with deprivation
-
- Dr James McDonald, Edinburgh University

Scottish MS Register-data request

- requesting data from the SMSR
<http://www.msr.scot.nhs.uk/Research/Main.html>
- email it to
NSS.isd- ScotHealthAudits@nhs.net